



# What's on



CLUB NOWRA

---

BOWLS | CAFE  
RESTAURANT | BAR | FUNCTIONS  
BAREFOOT BOWLS | COMMUNITY

For all enquires

☎ 02 4421 2100

✉ [info@clubnowra.com.au](mailto:info@clubnowra.com.au)

🌐 [www.clubnowra.com.au](http://www.clubnowra.com.au)







# CLUB NOWRA

## OUR FRIENDLY LITTLE CLUB

A pillar of our community since its founding in 1914, Club Nowra holds supporting our local community close to its heart. Known as "Nowra's friendly little club, where you are more than just a membership number". Their support of people in need, charities and the community as a whole help ensure that their place in the local community is a beneficial one.

Club Nowra provides the following services to members of our community:

- two excellently maintained bowling greens
- an inviting club house atmosphere for friends to gather
- supervised barefoot bowls events
- delicious affordable food and beverages for all
- excellent customer service from the moment you enter to after you've departed
- function space available to hire





# Thank you

## TO OUR SPONSORS



**AND**  
**pearcepercy**  
**CONSTRUCTIONS**



**KENNEDY'S**  
AUTO REPAIRS PTY LTD



*BRIDGE  
FAMILY*



**BCIB** INSURANCE  
BROKERS



**CLIMAX**  
AIR CONDITIONING





# South Coast Security



## About Us

We are the longest serving Security Company in the Shoalhaven. Protecting the area for over 40 years.

## Our Services

We cover a wide variety of Security Services, including Cash-In-Transit, Patrols & Alarm Responses, Alarm & CCTV Installations, 24/7 Monitoring and much more!

**Call Us Now**

**02 4423 3400**

[www.southcoastsecurity.com.au](http://www.southcoastsecurity.com.au)





# BOOKINGS ESSENTIAL

THE RHMS  
RESTAURANT

## SUNDAY NIGHT CHINESE BUFFET ALL YOU CAN EAT

MEMBERS \$25

VISITORS \$28

KIDS UNDER 10 EAT FREE\*

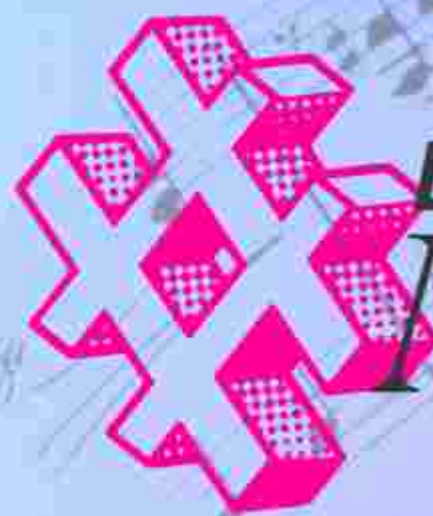
EVERY SUNDAY 5.30PM- 7PM

MENU CHANGES EVERY WEEK

KIDS RECEIVE 1 FREE 7 OZ SOFT DRINK

\*Child free with paying Adult





LOCAL LIVE

*Music*

SUNDAYS

*3PM-6PM*

**OCT 19**

*MET EA'OA*

**OCT 26**

*MARK GALES*

**NOV 09**

*RAVEN DUO*

**NOV 23**

*MET EA'OA*

**DEC 07**

*MICK ON WHEELS*

**DEC 21**

*MARK GALES*

**JAN 11**

*KEITH ZEHR*

**JAN 25**

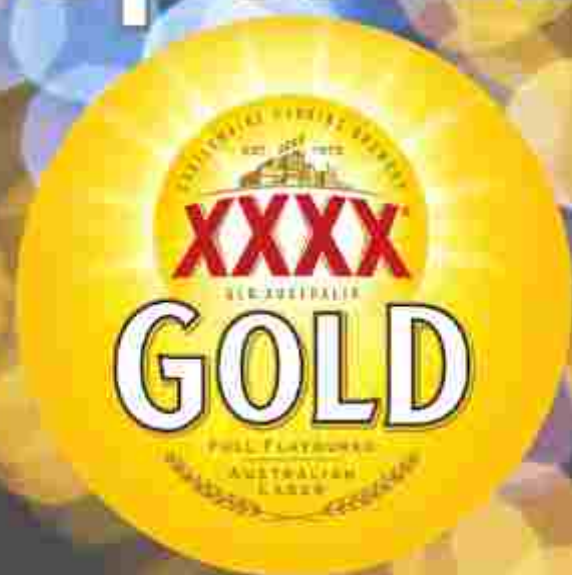
*MATT DENT*



Members Only

# BEER OF THE MONTH

September



October



November





# Celebration

## Made Simple

Bubbles by the bottle





# SHOALHAVEN MAXI BUSES AND TRANSPORT

Transfers  
Available  
24 Hours

7 Days a Week

Sydney and Canberra Airport  
Transfers from \$95 p/p

**0481 207 228**

SHMB@OUTLOOK.COM.AU



Weddings  
Shopping Trips  
Hens and Bucks Parties  
Private and Corporate  
Functions  
and everything in  
Between

## Maximum Service... Minimum Fuss



# Ocean

WITH CLUB NOWRA



## ***How To Enter***

Simply spend \$20 accumulative at the Main Bar, Cafe or Restaurant Bar, SWIPE your membership card to receive an entry into the draw.

**Winners must be present at the draw  
and have 4 minutes to claim their prize**

Commences Monday September 8th  
Finishes Wednesday December 10th at 5pm

Draw Commencing  
Thursday December 11th from 6pm with  
Special Thursday evening raffle

Winner Must Be Present At The Draw and  
Present Themselves Within 4 Minutes of the Draw  
Full Details, Terms and Conditions see our  
website

Club Nowra  
40 Junction St Nowra  
02 4421 2100

TP/01595



# ODYSSEY

*Thanks to*



SOUTH COAST  
CRUISE & TRAVEL

## ***We are giving away an Amazing Adventure***

***This year our summer giveaway will be a \$5,000.00 gift voucher to be used at amazing local business South Coast Cruise and Travel.***

***Voucher is suggested to be used wholly for the use of covering the cost of the cruise but can be used toward travel insurance and spending on Australia based Cruises.***

***Australian based cruises only require Driver's License or equivalent Identification to travel;  
International Trips will require a Passport to travel.  
South Coast Cruise and Travel are not responsible for procuring a passport for the winner.***

**South coast cruise and Travel  
21 Kinghorne St, Nowra  
02 4423 0276**





*Experience luxury  
this summer...*



SOUTH COAST  
**CRUISE & TRAVEL**

**THE ONLY CRUISE  
MASTER ACCREDITED  
Specialists in the Shoalhaven**

Worldwide Itineraries  
Ocean, River, Themed  
and Music Cruises  
Trending Destinations







Green fees  
**\$15**  
per person

# BAREFOOT BOWLS

## Why Barefoot bowls

Perfect for all ages, Barefoot Bowls is fun for everyone.

Whether it is for corporate team building or social gathering, Barefoot Bowls is the fun filled experience you are looking for.



### Club Nowra

40 Junction Street, Nowra



### Enquire now

[Bowls@clubnowra.com.au](mailto:Bowls@clubnowra.com.au)

## Barefoot Bites

### The Nest Cafe

Pizza and Garlic Bread	\$10 per person
Charcuterie Platters	\$10 per person
Fruit Platters	\$10 per person

### The Rinks Restuarant

Min 10 persons

Burgers and Chips	\$17 per person
Hot Finger Food Platters	\$20 per person

### Crabs Kitchen

BBQ Hire	\$100
BBQ hire with Cook	\$200





CLUB NOWRA

# Join our Countdown to Christmas with our Half Leg Ham Raffles

Friday November 28 40x Half Leg Hams

Friday December 5 40x Half Leg Hams

Friday December 12 40x Half Leg Hams

Friday December 19 20x Half leg Hams

15x Roast Porks

15x Turkeys

Get your Christmas Roasts

Sorted with us





SAHSSI

Supportive Accommodation and Homelessness  
Services & Healthcare Initiative Ltd

# Christmas Giving Tree

Give the gift of kindness this year to those in  
need.

Place your unwrapped gifts in the Port-A-Cot  
Between November 5 and December 10

## Gift Suggestions

As this years gifts will go to the Shoalhaven Homeless Hub many of the recipients will be adults  
that are doing it tough in the Shoalhaven.

Some suggestions for gifts are toiletries, sleeping bag, new socks, new towels, first aid supplies,  
hygiene products, gift cards (to front desk staff) or a bag/backpack with a range of the above  
suggestions inside.

Alternatively if you would like to make a cash donation to the Shoalhaven Homeless Hub you can  
see the front desk staff at Club Nowra or contact the Hub directly on 44232804.





# MELBOURNE CUP DAY

*Tuesday 4<sup>th</sup> November*

**\$30 Members | \$35 Visitors**

Ticket Price includes

Chinese Banquet Lunch

Best Photo Competition

Prizes for Best Dressed

Sweeps available for purchase

Complimentary Mystery Trifecta

Reserved Seating

Complimentary Drink

11:30am - 4:00pm | 02 4421 2100

40 Junction Street, Nowra

**TICKETS AVAILABLE AT THE BAR THROUGH TO FRIDAY 31<sup>ST</sup>  
OCTOBER**



**WEDNESDAY  
24TH SEPTEMBER  
END OF THE MONTH  
RAFFLE**

\$250 Cash  
10x Meat Trays  
10x Meat Voucher  
10x \$20 Lyrebird  
Rewards Points

Tickets on sale from 6pm  
Drawn from 7pm



**FRIDAY  
26TH SEPTEMBER  
END OF THE MONTH  
RAFFLE**

40x Meat Trays  
20x \$20 Lyrebird  
Rewards Points

Fishos Raffle  
\$175 of Lyrebird Rewards  
Points  
\$100 of Keno Giveaway

Tickets on sale from 6pm  
Drawn from 7pm

**WEDNESDAY  
29TH OCTOBER  
END OF THE MONTH  
RAFFLE**

\$250 Cash  
10x Meat Trays  
10x Meat Voucher  
10x \$20 Lyrebird  
Rewards Points

Tickets on sale from 6pm  
Drawn from 7pm



**FRIDAY  
31ST OCTOBER  
END OF THE MONTH  
RAFFLE**

40x Meat Trays  
20x \$20 Lyrebird  
Rewards Points

Fishos Raffle  
\$175 of Lyrebird Rewards  
Points  
\$100 of Keno Giveaway

Tickets on sale from 6pm  
Drawn from 7pm

**WEDNESDAY  
26TH NOVEMBER  
END OF THE MONTH  
RAFFLE**

\$250 Cash  
10x Meat Trays  
10x Meat Voucher  
10x \$20 Lyrebird  
Rewards Points

Tickets on sale from 6pm  
Drawn from 7pm





# *Beresfords*

## **Quality Meats**



**02 4421 3882**

**7 Kalandar Street, East Nowra**

**Are you in Nowra and craving top-notch, fresh meat? Look no further! Beresford's Quality Meats is here to satisfy all your meaty needs with our exceptional range of premium quality meats. NO Preservatives, NO hormones and mostly Gluten-Free.**

**Our friendly, helpful team are dedicated to providing all customers with the best meat and products you'll find anywhere in Nowra. We do things properly, and we're not interested in cutting corners.**

**Our guarantee of excellence comes with every cut of meat we offer. We have a huge variety of meats including chicken, pork, beef and lamb, all of the finest quality.**

**In addition to our International Awarded jerky & cabanossi, we also have several State and National awards for our snags.**







# MEAT RAFFLE

Wednesday Night

Tickets on sale from 6pm

Drawn from 6.30pm

Friday Night

Tickets on sale from 6pm

Drawn from 7pm

Sunday Night

Tickets on sale from 10am

Drawn from 6.30pm

**BADGE DRAW TO  
FOLLOW**







**walsh  
+monaghan** ▲  
valuers since 1923

02 4421 7155  
Suite 1, 1st Floor,  
57 Junction Street,  
Nowra NSW 2541  
PO Box 16  
Nowra NSW 2541

Leading property valuers since 1923

# Servicing New South Wales for 100 years. That's worth valuing.

Walsh & Monaghan Pty Ltd was first established in 1923 by South Coast residents, Ulrick Walsh and Stan Monaghan. Initially operating as a real estate and property valuing agency, it was housed in these early years above the historic Walsh's Mitre 10 building on Nowra's iconic main street.



The Longest serving accountant in the area, our focus is on building strong partnerships with businesses and organisations, and helping them grow

🏠 52 Osborne Street NOWRA NSW 2541  
☎ (02) 4421 4344  
📠 (02) 4421 2960  
✉ [mail@boothco.com.au](mailto:mail@boothco.com.au)





# NO ALCOHOL

*No Worries*



## AVAILABLE NOW





# HAPPY HOUR

4-5PM

\$5.50 SCHOONERS

\$4.50 HOUSE WINE



CLUB NOWRA

**Monday | Tuesday**

present your membership card to receive your discount.

Excludes craft and premium beers

## Wednesday Upsize On Us

**Pints For  
Schooner  
Prices**



PRESENT YOUR  
MEMBERS CARD AT  
THE BAR  
WEDNESDAY FROM  
4-6 PM



**250ml Wine  
For  
150ml  
Prices**

**PUNTERS**

## HAPPY HOUR



**\$6 SCHOONERS  
SATURDAYS 3-5PM**

Excludes Craft and Premium Beers.  
Membership Must Be Presented to Receive Discounted Price  
Summer/Daylight Savings Hours 3-5pm Weekdays / Standard Hours 3-4pm  
Times May Vary At Management's Discretion



# Sunday Footy Super Deal

**SUNDAY 3-6PM  
GET A PIZZA AND TWO  
HOUSE BEVERAGES FOR  
\$20 M \$22 V**



Offer available to Members and Visitors of Club Nowra.

House beverages include Standard 150ml Pour of House wines and  
Schooner of Standard Beer.

Premium and Craft Beer and Premium wines, Spirits and RTDs Not included



# **AND** **pearcepercy** **CONSTRUCTIONS**



**Building, Construction and Joinery for  
Nowra, Shoalhaven and Beyond**



**The business was established in 1982 and is now owned and managed by the Pearce family. The structure of the organization includes a number of site teams who are fully supported by dedicated project managers, estimators and administration personnel.**



**Our success is based on our commitment to quality, customer service, experience and competitive pricing. With clients are located throughout NSW, but primarily in the Sydney region, Wollongong, Illawarra, Shoalhaven and Southern Highlands. Pearce & Percy Construction is suitable for your building and construction requirements.**





**Established in 1982 by Ron Pearce & Grant Percy, Pearce and Percy Constructions Pty Ltd have served the Shoalhaven with their longstanding commitment to quality, customer service and experience, and their competitive pricing.**

**As specialized commercial and industrial builders Pearce and Percy undertake a range of works including office fitouts, custom joinery projects, as well as Club Nowra's most Recent refurbishment Project**

**Contact Pearce and Percy for your next Commerical Build**

📍 9 Geary Place, North Nowra NSW 2541

☎ 02 4423 1355

✉ michael@pearcepercy.com.au

Monday – Friday

8:00 AM to 4:00 PM





# KARAOKE

ALTERNATING SATURDAYS  
THIS SPRING  
7PM

WITH  
**JBWT**  
*Entertainment*



Sept 13<sup>th</sup>    Oct 25<sup>th</sup>  
Sept 27<sup>th</sup>    Nov 8<sup>th</sup>  
Oct 11<sup>th</sup>    Nov 22<sup>nd</sup>

Each Singer has a Chance to Win Lyrebird Rewards

[www.clubnowra.com.au](http://www.clubnowra.com.au)





# MUSICAL BINGO

Alternating Saturdays  
This Spring  
From 7pm  
\$3 to play

Sept 6<sup>th</sup>

Sept 20<sup>th</sup>

Oct 4<sup>th</sup>

Oct 18<sup>th</sup>

Nov 1<sup>st</sup>

Nov 15<sup>th</sup>

Nov 29<sup>th</sup>

3 rounds with minimum 3 winners Per Round



# MONDAY & TUESDAY NIGHT

## BANQUET FOR TWO SPECIAL

MEMBERS \$45 NON-MEMBERS \$50

TO THE VALUE OF \$60 | 68 SAVE UP TO \$18

Choice of 1 (one) Selected Entree

To the value of \$9 | \$11

Choice of 2 (Two) Selected  
Chinese Main Dishes

To the value of \$21 | \$23

Choice of 1 (one) Small Rice

To the value of \$9 | \$11



THE RINKS  
RESTAURANT



### TUESDAY NIGHT SPECIAL

Chicken Schnitzel, chips, salad  
and plain Gravy

OR

Fish, chips and salad

# \$18







# NEW

# Menu

THE NEST CAFE

M NM

Pricing

## SANDWICHES

FRESH OR TOASTED

Chicken   Lettuce   Mayo	\$7.00	\$7.50
Egg   Lettuce	\$7.00	\$7.50
Ham Salad	\$7.00	\$7.50
Ham   Cheese   Tomato	\$6.50	\$7.00
Ham   Cheese	\$6.50	\$7.00

## CAFE CLASSICS

Raisin Toast	\$3.00	\$3.50
Wraps	\$8.00	\$8.50
Turkish Melts	\$8.00	\$8.50
Beef Burger	\$9.00	\$10.00
Egg & Bacon Roll	\$8.50	\$9.50
Nachos	\$16.50	\$17.50
Fruit Salad	\$5.50	\$6.00
Garden Salad	\$5.50	\$6.00
Cheese Platter	\$12.50	\$14.00
Deluxe Cheese Platter	\$15.50	\$18.00
Chicken Wings	\$12.00	\$15.00
Chicken Tenders (5)	\$12.00	\$15.00
Mixed Hot seafood Platter	\$15.00	\$17.00

## PIZZA | PASTA | BREAD

Angus Beef	\$14.00	\$15.00
Salami 4 Cheese	\$14.00	\$15.00
Margarita (GF Available)	\$14.00	\$15.00
Supreme on Sourdough	\$14.00	\$15.00

Lasagne	\$7.00	\$7.50
---------	--------	--------

Garlic Bread	\$7.00	\$7.50
Loaded Garlic Bread	\$10.00	\$11.00

## PASTRY

Sausage Roll	\$5.00	\$5.50
Vegetable Pastie	\$6.00	\$6.50
Beef Pie	\$6.00	\$6.50
Potato Topped Beef Pie	\$7.00	\$7.50
Cheese and Bacon Beef Pie	\$7.00	\$7.50

## DESSERTS

Ice-Cream with Topping	\$3.00	\$4.00
------------------------	--------	--------

Served with ice-cream

Choc Ooze	\$9.00	\$10.00
Sticky Date Pudding	\$9.00	\$10.00

All Items are subject to availability.

## DRINKS

Cappuccino, Latte, Flat white, Mocha,  
Long Black, Hot Chocolate, Chai Latte

Cup   Standard	\$5.50	\$6.00
Mug   Large	\$6.00	\$6.50
Jumbo	\$6.50	\$7.00

Alternate milks available	\$0.50	\$0.50
<i>Soy, Almond, Oat, Lactose Free</i>		

Coffee Syrups	\$0.50	\$0.50
<i>Vanilla, Caramel, Hazelnut</i>		
Decafe	\$1.00	\$1.00

Iced Coffee/ Chocolate	\$6.00	\$6.50
Milkshake	\$6.00	\$6.50
Thickshake	\$7.00	\$8.00
<i>Chocolate/Strawberry</i>		

## SWEET TREATS

CHECK OUT OUR DISPLAY FRIDGE FOR TODAY'S

CAKE SPECIALS

Muffins	\$6.00	\$7.00
Cakes & Slices	\$6.50	\$7.00
Tarts	\$7.00	\$7.50
Cheesecakes	\$7.50	\$8.00

## CAFE DEALS

<b>Weekday Special (10am-4pm M-F)</b>	\$9.00	\$11.00
---------------------------------------	--------	---------

*Standard Coffee and a cake from the fridge*

<b>Everyday Deal</b>	\$8.50	\$10.00
----------------------	--------	---------

*Standard Coffee and a Toasted Sandwich*

<b>Sugar and Spice</b>	\$7.00	\$8.00
------------------------	--------	--------

*Standard Coffee and a Slice of Raisin Toast*

<b>Caffeine Couple</b>	\$5.50	N/A
------------------------	--------	-----

*2 Standard coffees Monday and Tuesday All Day*

<b>Taste Of Italy</b>	\$9.00	\$11.00
-----------------------	--------	---------

*Lasagne and Garlic Bread*

<b>Tropi Crave</b>	\$7.50	\$9.00
--------------------	--------	--------

*Fruit Salad with Greek Yogurt*

<b>Super Sunday Footy Deal</b>	\$20.00	\$22.00
--------------------------------	---------	---------

*2 House Drinks and a Pizza*

<b>Slice Slice Baby</b>	\$18.00	\$20.00
-------------------------	---------	---------

*Pizza and Garlic Bread*

<b>Perfect Pair</b>	\$30.00	\$33.00
---------------------	---------	---------

*Bottle of Orange Tree Wine & Deluxe Cheese Platter*





THE NEST CAFE

## EVERYDAY Deals

Standard coffee and a toasted ham cheese  
tomato sandwich  
Upsize your drink from \$0.50

**\$8.50** Members price

**\$10** Non-Members price



## Caffeine COUPLE



2 For 1 Standard Size Coffee

All Day

Monday and Tuesday

Members only



THE NEST CAFE

## Sugar & Spice COMBO

Enjoy a standard Coffee and Slice of Raisin  
Toast for just

**\$7** Members

**\$8** Non Members

Upsize Available on Coffee



## WEEKDAY SPECIAL

Monday - Friday 10am - 4pm

Standard coffee and any cake or slice from the display  
Upsize your drink from \$0.50

**\$9** Members Price

**\$11** Visitors







THE NEST CAFE

# TASTE OF Italy

**Lasagne and Garlic Bread**

**\$9**

Members Price

**\$11**

Non-Members Price



THE NEST CAFE

# Perfect Pair

**Choose 1x Bottle of House Wine & Deluxe Cheese Platter**

**Members \$30.00**

**Visitors \$33.00**

**House wines include:**

- Orange Tree Sauvignon Blanc
- Orange Tree Chardonnay
- Orange Tree Merlot
- Orange Tree Pinot Grigio
- Orange Tree Rose
- Orange Tree Shiraz
- Orange Tree Cabernet Merlot



Please Note: Prices are subject to change without notice. Prices are per person, plus tax and gratuity.

# Tropi Crave

*Refresh yourself this  
Summer with delicious Fruit  
Salad*

**Fruit Salad**

**Members \$5.50**

**Visitors \$6.00**

**Add Greek yogurt**

**\$2.50**



THE NEST CAFE

# Slice Slice BABY

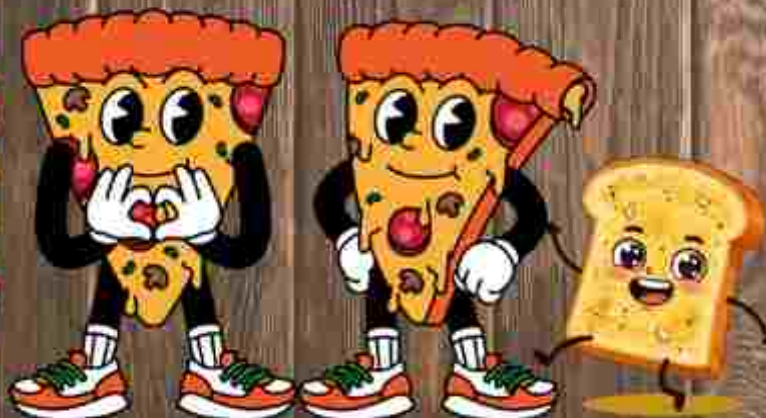
**Choice of Pizza and Garlic Bread**

**Members \$18**

**Visitors \$20**

**Pizza Choices**

- Angus Beef
- Margherita (GF available)
- Salami & Cheese
- Supreme or Seafood







# Tyrepower

Welcome to Murphy's Tyrepower. We are your local specialists for tyres, wheels, batteries, 4WD accessories, general mechanical & servicing in Nowra as well as the surrounding regions of Bomaderry, Shoalhaven, Huskisson and Culburra.

For friendly expert tyre advice come see us at 71 North Street, Nowra or phone us on (02) 4421 2311 to make a booking for your vehicle.



Independent  
Car Servicing



Tyre Retailers

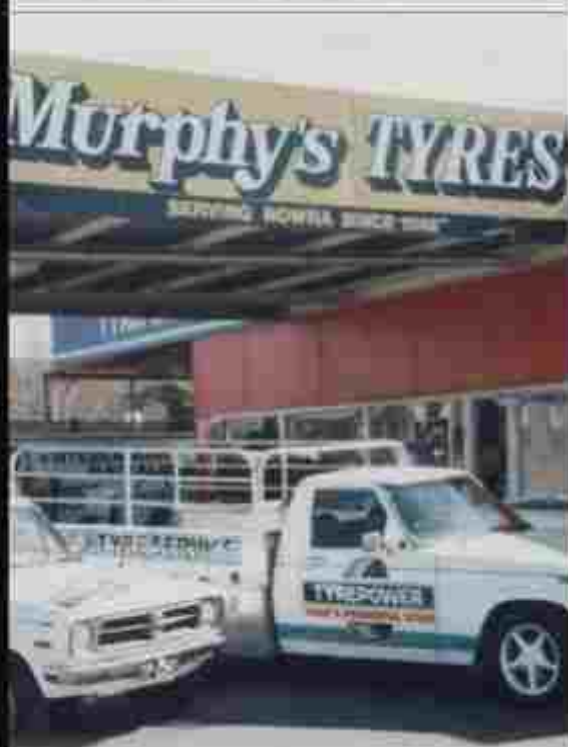
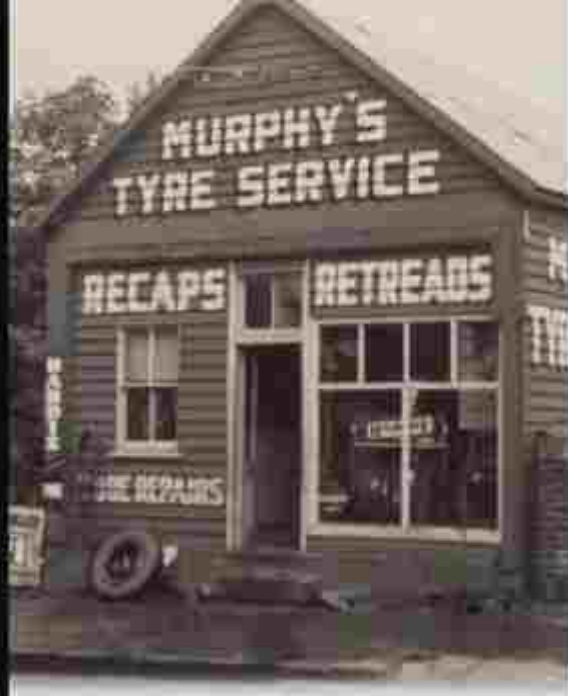


The humble beginnings of Murphy's Tyrepower in Nowra NSW, from 1946 to today, still operated by the same family, is now into its third generation in David Murphy. National and NSW Director Peter Murphy was the second generation, preceded by his father Jack and mother Mavis.

In 1972 the old site was sold to developers and Peter and Helene bought an old Renault / Peugeot dealership and moved the business around the corner to where they are today. After they became a Tyrepower store, Peter and Helene attacked business with a new vigour, and though it was a long time before they saw a significant return on a lot of effort; over the years the change to Tyrepower turned Murphy's Tyre Service into the successful and well respected business that it is today.

In November 2013, for the first time in its long history, Murphy's Tyrepower deservedly received the award of NSW Store of the Year. In 2014, Peter and David continue to give great support to the National Preferred Supplier's products including the Kelly program.

Recently they have remodelled and completely renovated the showroom; a massive and expensive project for an area that previously had wooden floorboards and very outdated electricals. The customer waiting area and amenities are now second to none among New South Wales Members. Plans are also at an advanced stage for a major upgrade to their mechanical workshop, and the storage areas have already been upgraded and extended.





# Courtesy

## BUS

**Wednesday | Friday | Sunday  
Evenings**

**Pickup and Drop offs**

**South Run**

**Hourly from 5pm**

**North Run**

**Hourly from 5.30pm**



**Drop Off \$2 per person**

**Call to book your pick up 02 4421 2100**

**Bus does not run 7-8pm Fridays and  
6-7pm Wednesday and Sundays**

**Last bus: Wednesday 9.30pm All Areas | Friday 11pm All Areas | Sunday 8.30pm All Areas  
40 Junction Street, Nowra | 02 4421 2100 | [www.clubnowra.com.au](http://www.clubnowra.com.au)**



# TRIVIA



Thursday

Rego from 7pm

Round 1 Starts 7.30pm

Main Lounge

Hosted by

Pete Brandtman

\$3 entry

\$70 cash for first place

\$40 Lyrebird rewards Lucky Door Prize





CLUB NOWRA

# OPEN BUTCHERS 2 BOWL TRIPLES

October Long Weekend

4<sup>TH</sup>-5<sup>TH</sup> OCTOBER  
2025

CLUB NOWRA, 40 JUNCTION ST NOWRA

- Entry Fee \$180 per team
- Lunch Included both days

SPONSORED BY



Register Before 26<sup>th</sup>  
September 2025

02 4421 2100

[bowlst@clubnowra.com.au](mailto:bowlst@clubnowra.com.au)

Find Us On Facebook  
[@ClubNowraLawnBowls](https://www.facebook.com/ClubNowraLawnBowls)



Prize Money in  
Excess of

**\$6,000**



# BINGO BINGO

First Game Begins at 9.30am and plays two halves.

Why not Pre-order your half-time delights from The Nest Cafe, before heads down and it will be ready for you at the break for your convenience. Prizes vary in value depending on the game and range from \$5-20

**PRIZE | FOOD | FUN**

**Monday and Friday 9.30am**



**Beginners Welcome**

**Find us In The Main  
Lounge Area**

Location and time subject to  
change at managements discretion

# Mahjong Monday 1pm



# POINTS PURCHASE *Bonus*

**Purchase Lyrebird Reward  
Points and we will add a bonus  
10% of the purchase to your  
card**

See examples below

Purchase Amount	Value Added to Card
\$20	\$22
\$50	\$55
\$80	\$88
\$100	\$110

Maximum value of \$100 dollars spend per transaction  
Cash or EFTPOS Transactions accepted ONLY



CLUB NOWRA

*Cocktails*  
ON TAP



Available All Day From The Main Lounge

Espresso Martini | Yuzo & Peach Gin Spritz

Drink wise Drink Responsibly





# MURPHY

family funerals

Murphy Family Funerals has been providing funeral services to the families of the Shoalhaven for over 35 years.

In this time, we have catered for the smallest and simplest of private family funerals to very large and involved public services. Our trained staff can provide families with simple choices, in the comfort of your own home or our relaxed office environment, to create the kind of funeral service that pays tribute to the memories of your loved one.

The dignified care that we provide starts with our first contact. Our compassionate staff are available around the clock, every day, to help when you need it most. Because most families on average arrange only two funerals in their entire lifetime, we guide you through this difficult time. The service that we offer our families is comprehensive.

We will notify all relevant authorities and handle all the funeral arrangements as directed by your family.

Our vastly experienced and caring staff will ensure all of your funeral arrangements are exactly as you wish.

85 Plunkett Street, Nowra, NSW 2541  
(02 4423 0722)  
[enquires@murphyfamilyfunerals.com.au](mailto:enquires@murphyfamilyfunerals.com.au)  
[www.murphyfamilyfunerals.com.au](http://www.murphyfamilyfunerals.com.au)

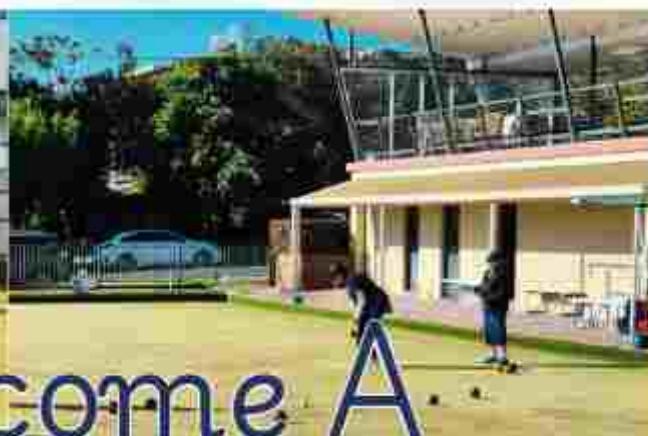






# CLUB NOWRA

## LYREBIRD LARRIKINS



Become A  
Lyrebird Larrikin  
Join now \$75



For more information email  
[bows@clubnowra.com.au](mailto:bows@clubnowra.com.au)

TUE	9AM	LADIES
WED	12PM	MIXED
THU	9AM	LADIES
FRI	12PM	MEN
SAT	1PM	MIXED

✉ [bows@clubnowra.com.au](mailto:bows@clubnowra.com.au)

☎ 02 4421 2100



# ADVERTISE WITH **CLUB NOWRA**

Call or email to  
discuss  
Advertising and  
Sponsorship.  
Packages  
available to suit  
every business



**YOUR BUSINESS HERE**



A pillar of our community from the start supporting the local community through hardships and triumphs alike.

Charity works and community involvement are values that drive all at Club Nowra.  
Become a sponsor today

Office@clubnowra.com.au 02 4421 2100





# CLUB NOWRA

## LYREBIRD REWARDS MEMBERSHIP

### HAVE YOU JOINED OUR FRIENDLY LITTLE CLUB?

#### AMAZING MEMBERS ONLY BENEFITS

##### INCLUDING:

- SUBSTANTIAL MEMBERS DISCOUNTS THROUGHOUT THE CLUB
- EARN AND REDEEM BONUS POINTS
- AUTOMATIC ENTRY TO BADGE DRAWS 3 TIMES A WEEK- WEDNESDAY, FRIDAY AND SUNDAY
- ACCESS TO MEMBERS ONLY PROMOTIONS AND GIVEAWAYS
- ENJOY BONUS REWARDS FOR THE MONTH OF YOUR BIRTHDAY INCLUDING KENO AND BAR VOUCHERS
- COURTESY BUS AVAILABLE WEDNESDAY, FRIDAY AND SUNDAY
- SWIPE YOUR CARD UPON ENTRY FOR A CHANCE TO WIN EVEN MORE AMAZING PRIZES

**\$6 FOR 1 YEAR**  
**\$15 FOR 3 YEARS**  
**\$20 FOR 5 YEARS**  
**\$110 FOR LIFE**



Club Nowra



02 4421 2100



info@clubnowra.com.au



Thanks for stopping by



CLUB NOWRA

OUR FRIENDLY LITTLE CLUB



[www.clubnowra.com.au](http://www.clubnowra.com.au)

Call 02 4421 2100